



Grazier News

October 2018

WELCOME

IN THIS ISSUE

It is good to be back

by Ian Wickham – Chairman of the Board

It is good to be back with another Grazier Newsletter. We began supporting our graziers with newsletters back in the 1990's (Issue 1 was in August 1993). For some reason we stopped in in 2010 after 100 issues.

It is with great pleasure that we can start with this service again, and hope that you will find something of benefit in these pages. You are welcome to contribute if you have something that you wish to share.

Please feel free to print this and share it around as we look at putting together some interesting articles on how we see heifer grazing developing, and our role in keeping you informed.

Well done

Firstly, what a great job Graziers are continuing to do in getting animals up to and above their target weights. I wish I could say that we have a 100% year with all our lines reaching their nominated weight – but not quite. It is really important that you communicate with your service manager when you think that things

might not be going as well as they could be. The Service Managers have the experience required to help you out.

Over the years

It is nearly 32 years ago that NZ Grazing Co Ltd. started, and I am proud to have been associated with many fine heifer owners and as many fine heifer graziers. Amongst them are Grant and Ross Skilton from Aorere Farm Partnership who have been with us for almost all of those 32 years.

Nearly 500,000 cattle looked after

In this time the company has cared for nearly 500,000 young cattle. We are expecting 500,000th cattle in the near future and will celebrate this achievement.

Watch this space.



Its good to be back

As New Zealand Grazing looks to provide leadership in the field of heifer grazing we are continuously looking at improving the way that we relate to our growers and with our owners.

Page 1



Mating Management

During the mating period, and especially during the first six weeks or so, it is most important that you observe what is happening with mating activity

Page 2

Mating Management

by Richard Hammond – Service Manager

During the mating period, and especially during the first six weeks or so, it is most important that you observe what is happening with mating activity.

Observation cannot be over-emphasised! What are you looking for?

1. The correct bulls (individuals) are actually with the mob, they have not gone somewhere else and you do not have visitors.
2. The bulls are not lame and do not demonstrate other injury or infection. Do not hurry bulls on a race with sharp/loose stones or use a heel biting dog, the bulls rear feet and legs are important for mounting.
3. The bulls are taking an active interest in "bulling" heifers. If you are present for only a few minutes every couple of days, you may get a wrong impression on this.
4. What you cannot see is the sperm fertility – but don't worry about that! It is a rare Jersey bull indeed that is not producing vast amounts of sperm cells on a daily basis – concentrate on seeing that he is delivering what he has in the right place at the right time – because this is what you can see and manage.
5. Make a note when the first three weeks is due and check that the "bulling" activity is diminishing to indicate successful conception rates.
6. In the good old days pre M.bovis good bull management always focused on rotating bulls but nowadays with M.bovis we don't recommend mixing mobs, so don't rotate bulls from one mob of heifers to another.
7. Remember bulls must stay in the heifer mob for weighing every month
8. Bulls are dangerous – take care of your personal safety.

ON THE M.BOVIS FRONT

In early November MPI will have the dairy farmer bulk milk test results and this will give an indication of how many more farms could be infected with M.bovis and will also indicate if the disease is spread further that eradication is not likely to be possible. We all eagerly await these results.

As most of the M.bovis originates with links from Friesian dairy farms, you need to continue to be very careful about where you source your bought in stock from. For more:

<https://tinyurl.com/y87fz5sa>



Bull Arrival Forms

With this season's bulls arriving on farm it is important at NZ Grazing that all bull movements and records are updated and completed.

In September Bull Arrival Forms were sent out via email and post, please verify and record the NZG or other tag and date of bull arrival for each bull and returned this by post or email.

When bulls have been put "in" and "out" with the heifers please confirm this with your service manager. This can be done by text, email or phone call.

Never buy a border collie when your drunk.



Pica Farmer Responsibilities

by Rebecca Hall - Administrator

Register your location

You need to register all of the locations where you are in charge of NAIT animals. If your farming location falls out of the 10km radius then you need to register each location individually meaning each farm will have a separate NAIT number.

Record and confirm animal movements

The farm PICA is responsible for ensuring all movements are recorded within 48 hours of the movement occurring.

Keep you NAIT account up to date

Make sure all deaths, loss or intended export of cattle are declared on the NAIT system and also providing correct up to date information

BULL MOVEMENTS

We take care of all the heifer and bull NAIT movements for owners and graziers.

Please make sure all information on movement dates are confirmed with your service manager.

With bulls moving around currently it is important that all bull arrival forms and confirmation of "bull in" dates are completed.



Malcom Jensen is showing the love. Our favourite "caption this" post on facebook was "I can smell milk on your breath Mr Farmer man"

NAIT

FAST FACTS

7,130,146

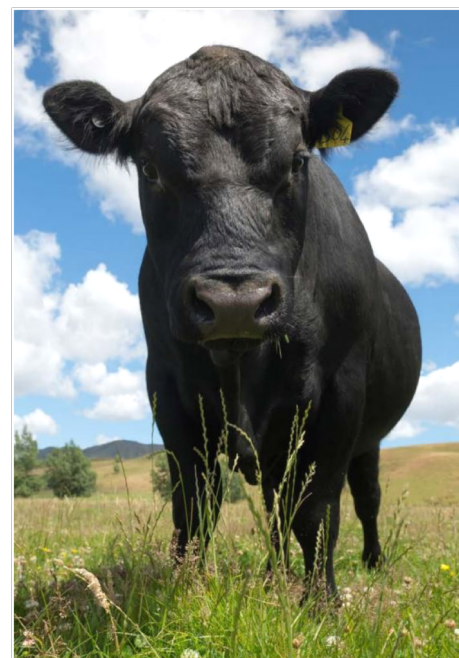
Animal Movements recorded

3,764,483

Animals Registered in NAIT

83,326

Farmers registered with NAIT



Digital Technologies

by Rebecca Hall - Administrator

Today several digital technologies are helping shape and transform the farming industry. As technology is changing so rapidly it is only natural that the industry adapts to the change. You will find that many farmers are already using mobile devices to connect to technologies such as sensors on their farms. However, there is still a lot of room for new tools and digital platforms to be produced that will help guide farm decision making. It is within that context that AgReaserch is entering a program to prepare New Zealand for the new era of digital agriculture.

The AgRerearch programme will help develop a technology roadmap to

help transition the agricultural industry.

Currently AgReaserch is working alongside an Australian firm Agersens who are the first to produce the world's first livestock virtual fence. It allows farmers to increase the production on farm and cut costs at the same time. The way in which the virtual fencing technology is controlled is using an app. Each animal has a GPS enabled training collar and the app allows a farmer to move, restrict and monitor herds or animals at anytime or anywhere.

For more information of Agersens go to <https://www.agersens.com/automated-strip-grazing/>



GRAZIER SURVEY

We believe in getting better – and want to know how you feel about our service. Towards the end of October you will receive an invite to complete a survey.

This survey should not take you longer than ten minutes and will help us to do a better job for you.

You don't need to wait for a survey. We are always happy to hear from you.

Phone: 0800 10 84 94

FACEBOOK

On Facebook:

Go to our Facebook page and enter our photo competition.

<https://www.facebook.com/NZGrazing/>



Like us on

Facebook

Grazier News

Published by NZ Grazing

64 – 66 Vivian Street
New Plymouth 4340

Correspondence to:

info@nzgrazing.co.nz

0800 10 84 94